


Presort Standard
US Postage Paid
Permit 104
Burlington, VT

ECRWSS RESIDENTIAL
CUSTOMER

SoBu *life*

Winter/Spring 2018

- ◆ Public Library Settles in City Center
- ◆ Improving the Williston Road Streetscape
- ◆ Groundbreaking SoBu
- ◆ SoBu's Mister Electric



Learn
about what's
on the Town
Meeting Day
Ballot



southburlington
A Different Place, Altogether.

CONTENTS

WE ARE SOUTH BURLINGTON.....	2
MARCH BALLOT ITEMS.....	3
THE NEW PUBLIC LIBRARY.....	4
WILLISTON ROAD STREETScape.....	7
GROUNDBREAKING SOBU.....	8
SOBU'S MISTER ELECTRIC.....	10
REMINDERS.....	12

RECREATION & PARKS GUIDE	1
Department Staff	2
Committee Staff	3
Our Partners & Sponsors	4
The Big Events	7
Youth Programs	10
Lacrosse	12
Teen Programs	13
Adult Fitness	14
Adult Programs	15
55+ Bus Trips	16
55+ Programs	17
SoBu Adds Some Bark to the Park	18
Summer Camps	19
Specialty Camps	20
Tween/Teen Camps	22
Sports Camps	23
Quick Guide to Events & Programs	26
South Burlington Parks Map	28

GET CONNECTED.
STAY INFORMED.



LIKE US ON FACEBOOK
@SouthBurlington



FOLLOW US ON TWITTER
@SBCityVT



WEBSITE
southburlingtonvt.gov

This is an official publication of the City of South Burlington, Vermont. The magazine is published three times a year and distributed to residents and businesses within the City. It is also available online at www.sburl.com. Reader questions and comments are welcome. Please send your correspondence (referencing *City magazine*) to:

PUBLIC INFORMATION OFFICE, CITY OF SOUTH BURLINGTON
575 DORSET STREET, SOUTH BURLINGTON, VT 05403
EMAIL: CHOLM@SBURL.COM

CITY COUNCIL

HELEN RIEHLE, CHAIR hriehle@sburl.com
 MEAGHAN EMERY, VICE-CHAIR..... memery@sburl.com
 TIM BARRITT, CLERK tbarritt@sburl.com
 TOM CHITTENDEN..... tchittenden@sburl.com
 PAT NOWAK..... pnowak@sburl.com

CITY MANAGER Kevin Dorn
 DEPUTY CITY MANAGER Tom Hubbard
 DIRECTOR OF COMMUNITY ENGAGEMENT & INNOVATION Coralee A. Holm

IMPORTANT NUMBERS

CITY CLERK'S OFFICE..... (802) 846-4105
 CITY MANAGER'S OFFICE (802) 846-4107
 COMMUNITY DEVELOPMENT..... (802) 846-4123
 FIRE RESCUE (NON-EMERGENCY) (802) 846-4110
 HUMAN RESOURCES (802) 846-4118
 LIBRARY..... (802) 652-7080
 RECREATION & PARKS (802) 846-4108
 PLANNING & ZONING (802) 846-4106
 POLICE (NON-EMERGENCY)..... (802) 846-4111
 PUBLIC INFORMATION OFFICE..... (802) 846-4127
 PUBLIC WORKS..... (802) 658-7961
 TAX DEPARTMENT (802) 846-4109
 WATER DEPARTMENT (802) 864-4361

We are happy to serve you.
LET US KNOW HOW WE CAN HELP YOU.



Infrastructure Bond Leads to First Year Savings and Beyond

BALLOT ITEM: *Bond will bring infrastructure under City control, saving thousands*

On March 6, voters will consider an item on the ballot to authorize a \$2.98 million bond to bring the final piece of South Burlington water infrastructure under city control.

The houses in the Hadley Road neighborhood, just below Rice High School, have always had their sewer discharged to the City of Burlington where it is processed at a Burlington sewer plant. South Burlington currently pays Burlington their prevailing sewer charge for this service.

In recent years the difference between South Burlington's sewer rate and Burlington's has grown with Burlington's being substantially higher. In recognition of this growing expense, South Burlington began exploring options to disconnect this sewer discharge from Burlington. The solution is to reroute the

sewer south to South Burlington's sewer plant on Bartlett Bay Road.

While this is a \$2.98 million project, it is eligible for nearly \$1.4 million in grants and credits. The debt will be paid back in 10 years and that expense will be borne by sewer rate payers, not through the general property tax base. Upon approval of the bond, the infrastructure of the area will be replaced and improved. Work would begin this spring.

Bottom Line: In year 1, the City will save at least tens of thousands of dollars when comparing the price of the debt repayment to the money we would pay to Burlington if this project were not undertaken. After the bonded debt is paid off, the return on investment will become hundreds of thousands of dollars annually.

71 Seconds Could Save Your Life

BALLOT ITEM: *Chittenden County Public Safety Authority*

On March 6, voters will consider an item on the ballot for the establishment of a Union Municipal District (UMD)—the Chittenden County Public Safety Authority.

A UMD is a vehicle that allows multiple communities to come together and form an organization to provide a particular service. The Chittenden Solid Waste District, Green Mountain Transit, and Champlain Water District are examples of UMDs.

The Chittenden County Public Safety Authority consolidates dispatch and 911 services in seven Chittenden County communities. Currently, each community runs its own, independent emergency dispatch center. Additionally, the Town of Shelburne operates what is called a Public Safety Answering Point

(PSAP)—which is one of the 911 call centers in Vermont.

Studies show that by consolidating dispatch and 911 services into one center we can save, on average, 71 seconds on every emergency call. 71 seconds could save your life.

City/Town managers, City Councils, and Select Boards in seven communities have strongly endorsed this proposal—South Burlington, Burlington, Winooski, Colchester, Milton, Williston, and Shelburne. Additionally, 18 Chiefs of Police and Fire Services from the area have endorsed the formation of the Authority as well.

The decision to proceed to establish the UMD/Chittenden County Public Safety Authority will be decided by voters.

March BALLOT ITEMS

▶ **ARTICLE I** ELECTION OF CITY OFFICERS AND CITY COUNCILORS

To elect all City Officers and City Councilors required by law.

▶ **ARTICLE II** APPROVAL OF CITY BUDGET

Shall the City adopt the City Council's proposed budget for FY 2019 totaling fifty three million, three hundred ninety two thousand, fifty six dollars (\$53,392,056.00) of which it is estimated fifteen million, two hundred seventy two thousand, one hundred seventy four dollars (\$15,272,174.00) will be raised by local property taxes?

▶ **ARTICLE III** INCURRING BONDED DEBT FOR BARTLETT BAY WASTEWATER TREATMENT FACILITY SYSTEM IMPROVEMENTS

Shall the City Council be authorized to issue bonds, notes and other evidence of indebtedness in an amount not to exceed two million, nine hundred and eighty thousand dollars (\$2,980,000) for the purpose of funding certain public wastewater infrastructure improvements that include new precast concrete pump stations and gravity sewer and ductile iron force main piping to the Bartlett Bay Wastewater Treatment Facility?

▶ **ARTICLE IV** CHITTENDEN COUNTY PUBLIC SAFETY AUTHORITY

Shall the City of South Burlington enter into an agreement for the formation of a union municipal district to be known as the Chittenden County Public Safety Authority, for the purpose of providing regional emergency dispatch?

SoBu

PUBLIC LIBRARY SETTLES IN CITY CENTER

After 47 years of sharing space with the City's high school, South Burlington's public library finally has a home all its own. The doors opened at the newly refurbished University Mall location on Dorset Street in early December 2017, following the relocation of over 45,000 items in the collection.

In August, City Manager Kevin Dorn finalized the lease of the transitional location and charged Director of Community Engagement and

Innovation Coralee Holm to manage the fit up and move. Working closely with Library Director Jennifer Murray, a plan for the 7,800-square foot space was formulated to accommodate the needs of library patrons with a targeted open date during the holiday season.

This move comes after many years of desire for a new location. It is a transitional move, until a new library facility can be developed within City Center.

"In the shared space at the high school, our librarians were working in cramped quarters and their programming was determined around the students' schedules. In this new space, librarians and patrons have defined spaces to work, collaborate, and connect," said Holm. Today, you can work with others in the "co-op," a semi-private space in the heart of the library; settle into comfortable lounge seating to read; or attend programming in the glass-lined meeting room.

The renovation from a retail space to a community space required the imaginative design that you see today. With a focus on the space being transitional, the furnishings and fixtures were purchased with the plan for them to be moved to the ultimate library location in the future. This includes moveable walls for the meeting room, server and storage space, and workstations for staff.

"We wanted to bring energy and a sample of what the new library in City Center could include. You will see our City brand in the colors of the space, as well as providing spaces that meet the Library's mission."

In its new location, the library has good handicapped accessibility, is near a covered parking lot, and will collaborate with the University Mall in using the common



space outside the library for its larger events, such as its winter concert series. New programming began in January along with an Open House event to officially welcome the community.

THE BOOK BRIGADE

The move itself required a precise plan, including meticulous measurements and math during the planning stages, and a lot of hard work from library staff, movers, and volunteers. Library Director Jennifer Murray had to assign a new home for every part of the collection in the new space, and ensure that during the move, each item would be delivered to the correct shelf in the new library.

Rather than packing boxes, marking them for delivery location, and unpacking, a type of book brigade was used. Using a host of shelved carts and bins, materials were systematically packed at the high school location, loaded on the moving truck, driven up the street, and delivered to the new location for unpacking. Most materials were moved directly from their former shelving to their new space. As you might imagine, this took a coordinated effort of both staff and volunteers.

Murray noted, “the South Burlington Public Library was very lucky to have over fifty dedicated volunteers assist with move preparation, execution, and clean-up.”

Two armies of staff and volunteers worked in concert with a team loading the moving carts at the high school, while others were waiting to rapidly reshelv the books, audiobooks, and DVDs as they arrived—one load at a time—at the mall. Over three days, Booska Worldwide Movers ferried the collection down Dorset Street to its new home. Then, within about 10 days, the librarians organized and settled the final details of opening the space to the public in the beginning of December.

The children’s library collection was moved in its entirety, with its painted book carts, colorful display units

and seating. Paul Steinman, a volunteer who installed wheels on the children’s picture book bins to make them more portable, noted “I think it’s good for the library to have an identity of its own, separated from the school.”

A NEW NAME

Along with the move comes a name change for the library. Since its inception in 1971, the library has been known as the

A NEW HOME FOR EVERY PART OF THE COLLECTION





South Burlington PUBLIC LIBRARY

South Burlington Community Library. In its new location, it is now the South Burlington Public Library. Why the name change?

Typically, a community library is named as such due to its location in a school facility. With the separation of space and collections, the City's library now becomes public.

SUCCESS

In the first few weeks since the move to the University Mall, more than 250 new library cards were issued. New visitors have been welcomed to the bright and welcoming space. Librarians share that, "we are seeing new faces and different populations here." The echoing feedback is that the visibility and location are good for the library at this time.

The City worked with Office Environments, a South Burlington company, to design the new layout and to select furnishings. With new comfortable lounge chairs, a cozy meeting pod, tables and chairs, and a new program room, there are a variety of spaces to spend some time. A standing height work station features a charging station for electronics. And, a new series of computer work stations have been installed for patron use.

Expanded workspaces and processing areas have improved the working environment for employees as well. Librarians and staff have been located within the library near their respective areas—such as the circulation librarian being near the circulation desk and the children's librarian anchors the children's section. Library director Jennifer Murray's office sits in the heart of the space, giving her the opportunity to see the activities and visitors at a glance.



Flexibility and re-use were a guiding parameter in the selection of furnishings and workspaces. All of the office spaces, including walls, can be moved to a new location. The program space and storage space have moveable walls which can be moved and reconfigured. This attention to the selection of fixtures and furnishings ensures that they can be used no matter the location.

INTO THE FUTURE

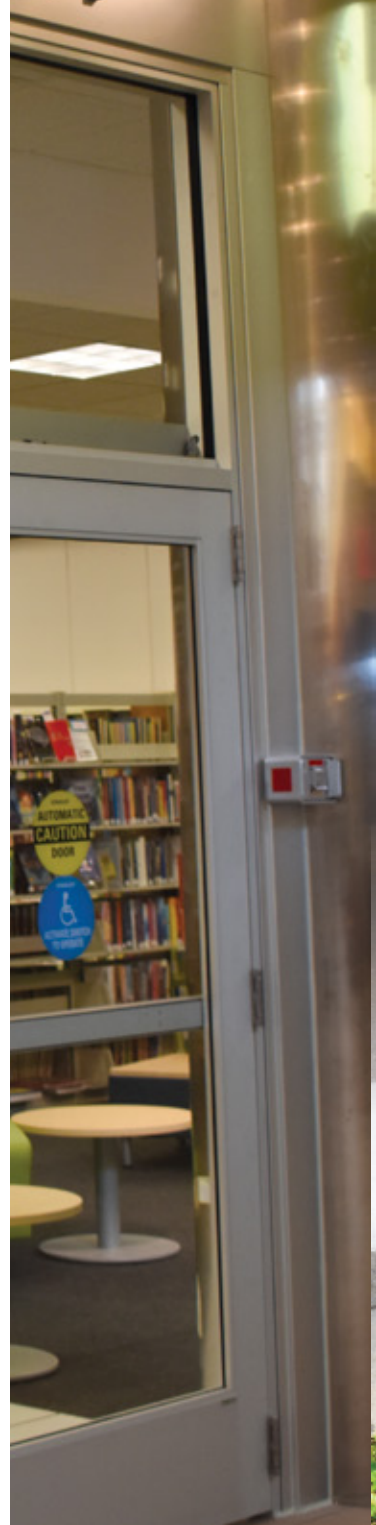
The mall is not intended to be the library's final destination. Rather, it is being viewed as a transitional space until a permanent site is ready. The city hopes to construct a new building to house the library and city hall on Market Street in the City Center TIF District.

Wiemann Lamphere Architects has been selected to design the new civic center in City Center, which includes space for the library.

Wiemann Lamphere has a commitment to sustainable development, and they are partnering with Humphries Poli Architects of Denver, Colorado, a library design firm with national expertise in the creation of 21st century public libraries.

Workshops began in January for the public and stakeholders to share ideas with the architects. There are additional meetings scheduled for March 2018 where the public can comment on options that have been developed. And, a final recommendation will come from that process for the City Council to review.

To learn more about the this project and the workshops, visit sbvt.gov.



Improving the Williston Road Streetscape

Federal grant will provide bicycle and pedestrian upgrades

Walkers, bikers, and transit users on South Burlington's busy Williston Road/US Route 2 Corridor have something to look forward to: improved bicycle and pedestrian facilities on the south side of Williston Road!

The Vermont Agency of Transportation announced that the City's Williston Road streetscape has been awarded \$800,000 in federal funds. "An essential way to make Vermont communities even more vibrant,

safe and livable is to increase opportunities for people to walk and bike. This type of investment of federal funds in public infrastructure will help attract future private investment in the local community and Vermont," said Senator Patrick Leahy. "Bike and pedestrian projects like this one improve Vermont towns and cities and are an important step to fostering stronger, more resilient communities."

The Transportation Alternatives grant

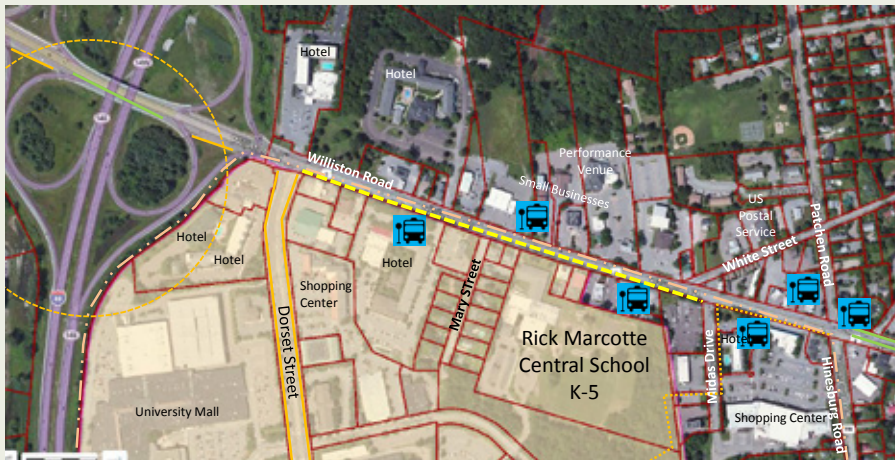
will fund design and part of construction costs for a new separated bicycle facility and sidewalk facility on the south side of Williston road, between Dorset Street and Midas Drive. This facility will include a landscaped snow storage buffer and pedestrian-oriented lighting. This is one of the largest grants the City has ever received for bicycle and pedestrian infrastructure.

The City has up to four years to design and build the project (until 2021). It was scoped in 2016-2017 and is already in the engineering phase. 50% of the project costs are eligible for Tax Increment Financing.

The project area is a gateway to South Burlington's City Center and connects similar planned improvements for Williston Road, between Al's French Fries and Hinesburg Road (in engineering) and the pedestrian bicycle bridge over I-89 (in scoping). Since the Cars to People project, the South Burlington community has been engaged in visioning, workshops, and planning efforts to transform Williston Road into a more welcoming experience for all users.

To learn more, visit sbvt.gov.

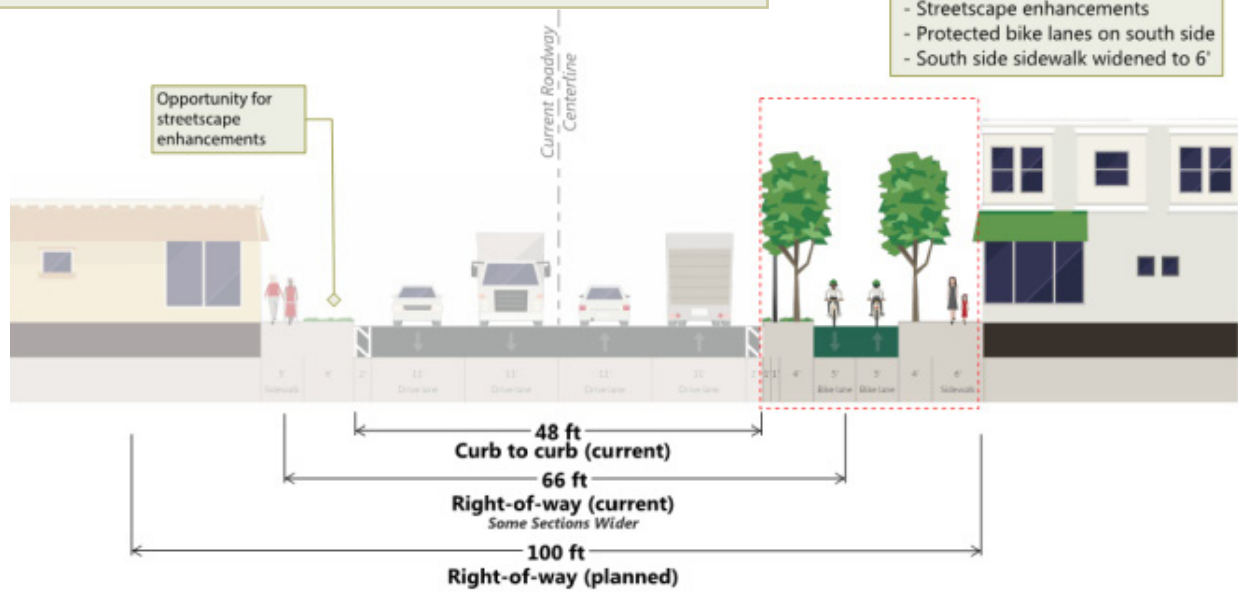
South Burlington Williston Road Cycle Track and Pedestrian Improvements Project Map



- Williston Road Cycle Track and Pedestrian Improvements Project Location
- State Designated New Town Center (City Center)
- State Designated Neighborhood Development Area
- Existing Bicycle Lanes
- Existing Off Road Bicycle Accommodation
- Existing Transit Stops (Connection to Williston, Burlington, Kennedy/Kimball Ave, Airport)
- Future Cycle Track & Pedestrian Improvements (in Engineering/Garden Street TIF Project)
- Future Pedestrian/Bike Bridge over Interstate (in scoping by CCRPC)

Note on sidewalks:
Williston Road and all intersecting streets have sidewalks except for Mary Street

- Changes:**
- Signal upgrades and optimization
 - Access management
 - Streetscape enhancements
 - Protected bike lanes on south side
 - South side sidewalk widened to 6'





On any given day in SoBu, there are numerous development projects in varying degrees of completion. Some have been in planning for years and others have moved more quickly. If you travel around the city now, you will see some larger projects that are in the beginning stages of construction.

ALLARD SQUARE

Market Street in City Center



Shovels hit the ground with namesake Doris Allard in November. Occupancy is slated for November 2018.

This multi-family residential building will provide 39 one- and two-bedroom apartments for older Vermonters at both affordable and market-rate rents. The facility will meet Efficiency Vermont standards and include amenities such as covered parking, air-conditioning, secure storage units, and garden beds. The project is a public/private partnership between the non-profit Cathedral Square Corporation and Snyder Braverman Development Company.

The need for affordable housing for older Vermonters is skyrocketing—Cathedral Square has

more than 800 people on waiting lists currently. The facility is the first major residential development project in City Center.

DID YOU KNOW?
The building is named for Doris Allard, age 93, Cathedral Square's longest-tenured resident.

HILLSIDE AT O'BRIEN FARM

O'Brien Farm Road (formerly Eldredge Street)



Brothers Dan and Leo O'Brien cut the ribbon celebrating the project commencement.

This residential project will develop 20 unique homes on 30+ acres. Single family and townhomes will be constructed to compliment the



SoBu

topography of the site. The neighborhood offers greenspace, a formal park, and a trail system linking sidewalks, recreation paths and wooded areas. Each home will reflect the tastes of each owner. Solar panels are even an option for each new build!

DID YOU KNOW?

The O'Brien family has owned and worked this land since 1944, when purchased to expand their cattle and farming business. Brothers Dan and Leo O'Brien raised their families on the crest of the hill. Today, three generations of the family continue to live on the land.

LARKIN TERRACE

Corner of Shelburne Road and Fayette Road



Larkin Terrace will anchor the corner of Shelburne Road and Fayette Road.

This planned unit development consists of a commercial space on the first floor and 60 residences on the remaining three floors. Included

in the commercial plans are a restaurant and retail spaces. The streetscape improvements and architecture of the building will add interest to this corner.

DID YOU KNOW?

This building will be the tallest building on Shelburne Road when completed. Although it may not seem so when on the street due to the design of the top floor.

TARGET at the UNIVERSITY MALL



Proposed view from Dorset Street.

In February, renovations on the future home of Vermont's first Target will begin. The store will be developed in a new, small-format way that will allow the company to serve the local needs of the community. The company will focus on inventory that is selected specifically for our area.

Additional retailers—such as Victoria's Secret and Bath & Body Works—will also be renovating and moving to new locations in the mall.

DID YOU KNOW?

The SoBu Public Library is next door to the new Target location. In the fall, you can shop and visit the library in one trip!

SOBU'S MISTER ELECTRIC

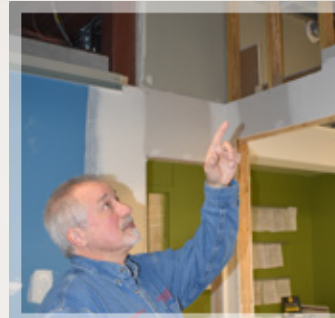
A SPOTLIGHT ON THE CITY'S ELECTRICAL INSPECTOR



Each day begins early for South Burlington's electrical inspector Jim Chagnon. Sometimes this means meeting with a contractor in the field, or processing applications and reports in the office. He holds regular office hours from 8 to 10 am, where he is available for walk-in contractors or residents. Then, he is off for a packed day of appointments with a wide variety of projects to visit. The majority of each day is spent at construction sites.

In the City of South Burlington, the electrical inspector works closely with the building inspector and fire marshal in the oversight of construction to meet state and local codes. Each project follows a similar arc of review and inspections, beginning with a permit application. When an application for a project is submitted, the building inspector/fire marshal reviews the full plan set and Jim reviews the electrical plan. Then, depending on the size of the project, a visit schedule is determined.

For a small project such as the renovation of a single-family rental home, Jim typically visits the project 2-3 times. The first visit is after the "rough in" is complete—which consists of running all electrical cabling to electrical boxes, before sheetrock or wall finishes or ceilings are installed. He provides direction to the electricians for the work to move toward completion. When the project is complete, Jim inspects the work to assure that it meets code regulations; this visit is the final inspection. If the project meets the requirements, a final certificate is granted.



Jim is the City's first electrical inspector, starting in this role three years ago. Previously, the State of Vermont filled this inspection role. With construction in South Burlington booming and an average response time of 4 days for contractors to see an inspector, the City chose to add the inspector role locally. Now, the City has a close review process of building code enforcement which can see an average of 250 projects pass through Jim's review, annually. Bringing the position "in-house" has resulted in better relationships with contractors and the response time for on-site

inspection has been reduced to within a day, and often can occur same day.

After 37 years of working at Burlington Electric Department, Jim was working in a management position in the meter department when he decided that he wanted to get back to working with professionals and residents in the field. "I enjoy working with folks on the variety of projects that take place in the City. Some projects are short and others take a year or more of regular visits."

On commercial projects, Jim is often part of the development team throughout the build. After plan approval, he meets weekly with the contractors to review progress and provide guidance for the work to meet regulations. Large projects can require 100 or more visits before the final inspection is complete.



South Burlington Energy Committee Thanks The Community For Keeping Its Eyes On The Prize

In 2014, the City of South Burlington, under the leadership of its Energy Committee (SBEC), joined a competition called the Georgetown University Energy Prize (GUEP). With a \$5 million prize for energy projects for the winning community, groups like SBEC came together in more than 50 small and medium-sized communities nationally. As in many communities, GUEP was the catalyst to advance change which was already underway in South Burlington. GUEP focused on innovative approaches to decreasing per capita energy usage, best practices for sustained energy efficiency, and public education in methods, benefits, and environmental costs of the full fuel cycle.

During the two-year measurement period, SBEC hosted or participated in over 50 events, laying the foundation for ongoing progress. South Burlington residents took action and are now saving over \$750,000 in energy costs per year as a result – and continued savings will lead to more than \$5 million in their pockets over time. Those savings continue month after month for those who undertook major changes, but also for simple changes such as switching lighting over to LED bulbs or switching to low flow shower heads. While the GUEP has now concluded with Fargo, ND as the winner, energy savings itself is a prize that is within the reach of everyone.

Continue to access news, tips, and resources at energyprize.org or @energyprize on Facebook.



PROPERTIES REQUIRED TO HAVE AN ELECTRICAL INSPECTION	AVERAGE COST OF A PERMIT	HOW TO CONTACT JIM
<ul style="list-style-type: none"> • Single family rental home • Duplex • Multi-family home / Condo • Any commercial property 	<p>Minimum permit is \$60, but fees are determined by project. A large project can cost \$1,000+.</p>	<p>DROP-IN OFFICE HOURS: 8 am to 10 am</p> <p>OFFICE LOCATION: South Burlington Fire Station, 575 Dorset Street</p> <p>SET UP AN APPOINTMENT: 802-383-1787 jchagnon@s Burlington.com</p>



ISIS 2017 TOP CAT



GINA 2017 TOP DOG

REGISTER YOUR PETS

It's Time! Register your furry friends before April 1, 2018. All dogs and cats, ages 6 months or older, must be registered. Why? To ensure that the necessary vaccinations are current for the protection of South Burlington citizens— complying with state law.

REGISTER:

- In person, at the City Clerk's Office. Hours: 8 am to 4:30 pm M-F
- Return form below and payment via mail or after hours in the City Hall dropbox.
- At www.sbvt.gov. Look for Isis and Gina on our homepage. Click and register.

Checks should be made payable to City of South Burlington. Mail to City Clerk, 575 Dorset Street, South Burlington, VT 05403.

Registration fees increase after April 1st.



REGISTER YOUR SECURITY ALARM

Register by April 1, 2018

Annually, security alarms for residences and commercial buildings located in South Burlington must be registered with the police department. Failure to register or renew your system can result in fines and a "do not respond" order by police.

For more information and forms: www.sbpdtv.org



MED RETURN

HELP keep prescription drugs out of the wrong hands.

ACCEPTED ITEMS

- Prescriptions (including patches and ointments)
- Over-the-counter medications
- Vitamins
- Samples
- Pet Medication

A MedReturn box is located in the lobby of the SB Police Department at 19 Gregory Drive, South Burlington.

You can deposit any legal, non-liquid medication there 24 hours/day. It does not need to be marked, and will be properly disposed of—no questions asked.



SOBU SPACES 2020

A new civic center is being planned for City Center, including a city hall and library. The conversation continues and we need your input!



(IMAGINE) ALTERNATIVES

Learn about the possible options.
Thurs, March 8 @ 7 pm or Sat, March 10 @ 10 am
Green Mountain Room, City Hall, 575 Dorset St.

RE (IMAGINED) RECOMMENDATION

Learn about the proposed facility.
Tues, March 13 @ 7 pm
Green Mountain Room, City Hall, 575 Dorset St.



WANT TO LEARN ABOUT THE CITY FY19 BUDGET?

Join us for a "town hall" meeting the night before Town Meeting Day. Ask questions. Be informed.

At www.sbvt.gov, you can find:

- the meeting agenda
- FY17 Audit report & Management Letter
- Budgets: Draft FY19, Current FY18

Just look for the calculator!

Pre-Town Meeting/Public Hearing
Monday, March 5
FH Tuttle Middle School Cafeteria, 7 pm



southburlington

A Different Place, Altogether.

SoBu *play*

Winter/Spring 2018



**SUMMER
CAMP
PREVIEW**

Page 19-24



southburlington
RECREATION & PARKS

DEPARTMENT STAFF:

- HOLLY REES, CPRP** *Interim Director*
- MAGGIE LEUGERS, CPRP** *Director of Projects*
- BRETT LEONARD, CPRP** *Recreation Specialist*
- TRAVIS LADD** *Special Projects Coordinator*
- KATHLEEN COTE** *Senior Program Coordinator*



For over 38 years Darla has been the welcoming and smiling face at the front line of this department, helping thousands find health and wellness in their pursuit of recreation. Through her engaging personality, she has developed more

than professional connections to those she serves; for many, she is like family. Bruce O'Neil (former Director of Recreation and 24-year colleague) describes Darla as "A true diplomat and a public relations expert." During her tenure, the department has seen many changes, but through them all Darla has remained the constant; a true staple. As her work family, we have been privileged to know her as a professional and friend.

Darla, thank you for your dedication, commitment and service. You have fulfilled your professional ambitions, now is the time to achieve your personal aspirations. Take our love and best wishes with you as you embrace this next adventure. We wish you a happy and fruitful retirement. You will be missed!



REGISTRATION NOW OPEN!

WINTER/SPRING & SUMMER PROGRAM REGISTRATION INFORMATION

DECISION DEADLINES

Decision deadlines are set at 14 days prior to the start date of a program, unless otherwise stated. Registration will close when a program has reached its maximum number and a waiting list will be created. *(For summer camps, registration deadlines are set 1 month prior to the start date of a camp.)

FEES & PAYMENTS

Payment must be made in full at the time of registration. Participants will not be allowed to attend a program until payment is paid in full. Payment must accompany all mailed-in registrations to be processed.

SCHOLARSHIPS

South Burlington Recreation & Parks provides financial assistance to South Burlington families who may not otherwise be able to afford to participate in our recreation programs. Contact us at 802-846-4108 or recreation@sburl.com for more information.

NOTIFICATION

A receipt, with program information and comments, is provided to all In-Person Registrations and emailed to all Mail-In and Online Registrations. We notify all registered participants of any changes or cancellations by email.

CANCELLATIONS & REFUNDS

We reserve the right to cancel or consolidate any program that does not meet the minimum participation number required within 48 hours of program start. A full refund will be issued if we cancel.

REFUND POLICY

Refunds are granted up to 7 days prior to the start of a program or activity. A \$10.00 processing fee is deducted from all refunds. If there is an outstanding balance, the refund will be automatically applied and any remainder will be refunded. Refund checks take approximately three weeks to process.

EASY REGISTRATION!

Registration is accepted on a first come, first serve basis. Some programs have limited enrollment, so early registration is encouraged. You can view our detailed Registration Information and Refund Policy on our website at recandparks.sbvt.gov



ONLINE



MAIL



WALK IN

WE GLADLY ACCEPT: CASH, CHECKS & CREDIT CARDS





RECREATION & PARKS COMMITTEE

JENNIFER KOCHMAN – Chair
MIKE SIMONEAU – Vice Chair
GLENN SPROUL
LIZ ROBITAILLE
REBECCA POQUETTE
GEORGE DONOVAN
PAUL STEINMAN
CATHERINE LANGROCK
LINDA CHIASSON



SB RECREATION & PARKS FOUNDATION

JENNIFER KOCHMAN
JOHN BUECHLER
RALPH VEVE
DANIEL O'ROURKE
DAVE KAUFMAN
MIKE SIMONEAU



NATURAL RESOURCES COMMITTEE

BETTY MILIZIA – Co-Chair
KRISTIN WILLIAMS – Co-Chair
LISA YANKOWSKI
DAVID CRAWFORD
LAURA WILLIAMS
LINDSAY BRYCE



NORTH COUNTRY
Your community credit union



**Proud supporter of South Burlington's
Recreation & Parks Department**

**Swift Street
South Burlington***

**For a complete list of locations, visit us online.*



www.northcountry.org

(800) 660-3258

SB Community Gardens

Important Dates for Returning Gardeners

March 1st — Registration Deadline to Maintain Returning Gardener Status (all registrations received after this date will not be guaranteed the same plot assignment).

Important Dates for New Gardeners

March 2nd-April 2nd — Registration Period to be put on a waitlist for a plot. **Please note we are taking a community waitlist in an effort to ascertain resident interest as we advocate for additional garden space.*





Time spent among trees is never wasted time.
 - Katrina Mayer

OUR SPONSORS

Associates in Orthodontics
 Body Resolution
 Burlington Bagel Bakery & Café
 Cairns Arena
 Claussen's Florist & Greenhouse
 Dakin Farms
 Darn Tough Vermont
 Dunkin Donuts
 Earl's Cyclery and Fitness
 Farmers & Foragers
 Farrell Distributing
 Five Guys
 Free Press Media
 Growing Kids South Burlington
 Hall Communications Radio Group
 Homewood Suites
 LL Bean
 Larkin Hospitality

Let's Grow Kids
 Localmotion
 Marco's Pizza
 Member's Advantage
 The Mill Market & Deli
 North Country Federal Credit Union
 O'Brien Brothers Agency
 Paquette Full of Posies
 Party City
 Pet Food Warehouse
 Price Chopper Supermarkets
 Rotary Club of South Burlington
 Sam Mazza's Farm Stand
 SBHS Coalition for Community Service
 Seaway Car Wash
 South Burlington Energy Prize
 South Burlington Family Center

South Burlington Fire Department
 South Burlington Library
 South Burlington Police Department
 South Burlington Department of Public Works
 South Burlington School District
 Snowflake Chocolates
 Starbucks
 Sugarsnap Catering
 Sun Common
 The Other Paper
 Trader Dukes
 Twincraft Skincare
 U-Haul South Burlington
 University Mall
 Vermont Tent Co.
 Vermont Youth Conservation Corps
 WCAX

Considering a credit union?
Consider us!



**Members
Advantage**
Community Credit Union

**Savings & Checking Accounts
Auto, Personal, & Home Equity Loans
And More!**

Visit us in South Burlington
(802) 862-8184 | 50 White Street

Or find us online

www.maccu.org
facebook.com/southburlingtonmaccu

THE BIG EVENTS!

Kites in the Park

Memorial Day Ceremony

Friday, May 25
11:30 AM
Veterans Memorial Park



Friday, May 11
6 - 8 pm
Veterans Memorial Park

FAMILY SKATE

SATURDAY, MARCH 17
2 - 4 PM
CAIRNS ARENA



Family Bingo

Saturday, April 7
5:30 - 7:30 pm
FHTMS Cafe

BINGO

1 - 15 16 - 30 31 - 45

14 27 33

9 25 37

8 17

B

I N

BINGO

1 - 15 16 - 30 31 - 45 46 - 60 61 - 75

10 16 32 52 72

1 20 41 49

6 24 47

9 18 30

G

O

THE BIG EVENTS!

GREAT AMERICAN CAMP OUT

JUNE 23 - 24
5 PM - 9AM
VETERANS MEMORIAL PARK



July 21 & August 19
5-7 pm
Red Rocks Park

SoBu Nite Out SUMMER SERIES



Veterans Memorial Park
5:30 - 8:00 PM
Thursdays

Dates

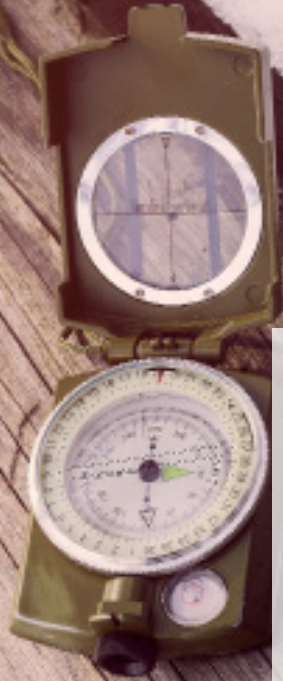
June 28, July 12, July 26, Aug. 9,
Aug. 23, & Sept. 6

Food Trucks | Live Music
Bike Valet | Yard Games





ARE YOU READY FOR AN ADVENTURE?



FEBRUARY FREE CLINIC SCHEDULE

- Feb. 8 - Wildlife Tracking
- Feb. 13 - Winter Stargazing
- Feb. 15 - Ice Fishing Basics
- Feb. 20 - Winter Outdoor Survival
- Feb. 22 - Surviving the Zombie Apocalypse

Register at www.llbean.com/btc

49 Church St | Burlington, VT 05401 | www.llbean.com



Gate Open Daily: 9 am - 7 pm

May 27 - September 3

Park Amenities

Waterfront Area
 Bath House w/ Restrooms & Changing Areas
 2.5 Miles of Walking Trails
 Picnic Areas w/ Grills

Fees

Season Pass	SB Resident	\$10
	Non-Resident	\$25
Daily Pass	SB Resident	\$5
	Non-Resident	\$8

*Swimming is at your own risk, no lifeguards provided.
 We encourage patrons to park inside the park between 9 am - 6 pm daily.*

YOUTH PROGRAMS

YOUTH GOLF CLINIC

333034-A : JULY 10-31 : DECISION DEADLINE JUNE 26
TUESDAYS : 4-4:45PM : CATAMOUNT
RESIDENTS \$100 : NON-RESIDENTS \$110

333034-B : JULY 11-AUGUST 1 : DECISION DEADLINE JUNE 27
TUESDAYS : 5-5:45PM : CATAMOUNT
RESIDENTS \$100 : NON-RESIDENTS \$110

Children will learn the fundamentals of golf on our two-tiered driving range and multiple greens for practicing. Our goal is to introduce the game of golf to beginners in a fun, active setting. Ages 5-7 (333034-A) and Ages 8-11 (333034-B). Instructor: Dan Lehmann, PGA Professional

TYKES BASEBALL CLINIC 323004-A

AGES 3-5 : APRIL 21-MAY 19 : DECISION DEADLINE APRIL 6
SATURDAYS : 8:30-9:30AM : VETERANS MEMORIAL PARK
RESIDENTS \$40 : NON-RESIDENTS \$48

This is a parent/child program and is designed to introduce baseball/softball through fun games and activities. It will provide children the opportunity to interact and play within their own age group. Each week consists of different skills and games. Instructor: Rec. Staff



INDOOR SOCCER

333005-A : MARCH 10-APRIL 14 : DECISION DEADLINE FEBRUARY 23
SATURDAYS : 8:30-11AM : CENTRAL SCHOOL
RESIDENTS \$45 : NON-RESIDENTS \$54

333005-B : MARCH 10-APRIL 14 : DECISION DEADLINE FEBRUARY 23
SATURDAYS : 8:30-11AM : CENTRAL SCHOOL
RESIDENTS \$45 : NON-RESIDENTS \$54

This program is designed for those who love to play the game of soccer, or are just looking to get out and get active on a Saturday morning. The major emphasis is on exercise and fun. Each week teams will be formed for casual play. Actual program time is dependent on number of enrollees. Grades K-2 (333005-A) and Grades 3-6 (333005-B). Instructor: Rec. Staff

YOUTH GYMNASTICS 333011-A

AGES 4-12 : MARCH 31-APRIL 21 : DECISION DEADLINE MARCH 16
SATURDAYS : 10:45-11:45AM : GREEN MOUNTAIN GYM
RESIDENTS \$68 : NON-RESIDENTS \$82

This is an introductory program designed for new and beginner gymnasts allowing them the opportunity to work on basic gymnastics skills. We will utilize all four events (vault, bars, beam and floor) and the tumble track. Students will be divided into appropriate age groups based on numbers enrolled. *Age groupings will be determined by the gym once enrollment is received. Instructors: Green Mountain Training Center

YOUNG ATHLETES PROGRAM 245001-A

AGES 2-7 : MARCH 10-APRIL 28 : DECISION DEADLINE APRIL 6
SATURDAY : 11AM-12PM : CENTRAL SCHOOL
FREE!

Special Olympics Young Athletes is a sport and play program for children with and without intellectual disabilities (ID), ages 2 to 7 years old. Young Athletes introduces basic sport skills, like running, kicking and throwing. Young Athletes offers families, teachers, caregivers and people from the community the chance to share the joy of sports with all children.



Braces ~ Invisalign For Children and Adults



Essex
137 Iroquois Ave
879-6464

1-800-750-1000

www.vtbraces.com

South Burlington
1 Kennedy Drive
862-7569

LEARN VIOLA! 235200-B

AGES 9-12 : MAY 8-JUNE 12 : **DECISION DEADLINE APRIL 24**

TUESDAYS : 7-8PM : FHTMS

RESIDENTS \$105 : NON-RESIDENTS \$120

This 6-week class is for beginners with no experience playing the viola. We will start off with basic care and maintenance, and progress to playing simple songs from our method book. The goal of this class is to have fun learning a new instrument! Books are included in the cost. Vermont Violins is offering a discounted rental of \$25 viola/bow and \$5 for rosin for the duration of the program. Students should come to the first class with a viola. Instructor: Sharon Waxman

FLOOR HOCKEY

333012-A : MARCH 20-APRIL 17 : **DECISION DEADLINE MARCH 6**

TUESDAYS : 6-8PM : TBD

RESIDENTS \$45 : NON-RESIDENTS \$54

333012-B : MARCH 20-APRIL 17 : **DECISION DEADLINE MARCH 6**

TUESDAYS : 6-8PM : TBD

RESIDENTS \$45 : NON-RESIDENTS \$54

Floor Hockey is a fun indoor sport, come try it out with us! Each week we will split into teams and play. No equipment needed. Actual program time is dependent on number of enrollees. Grades 1-3 (333012-A) and Grades 4-6 (333012-B) Instructors: Rec Staff

FIELD HOCKEY 333017-A

GRADES 1-6 : APRIL 21-MAY 19 : **DECISION DEADLINE APRIL 6**

SATURDAYS : 9:45-10:45AM : VETERANS MEMORIAL PARK

RESIDENTS \$40 : NON-RESIDENTS \$48

This program is for any youngster looking to get outside, be active and learn the sport of field hockey. Separate groupings of 1st-3rd and 4th-6th will be done each week if numbers allow. Each week will consist of learning new skills and playing the game. Instructors: Rec. Staff

CHEERLEADING 333010-A

AGES 7-12 : MARCH 14-APRIL 18 : **DECISION DEADLINE FEBRUARY 28**

WEDNESDAYS : 6-7PM : ORCHARD SCHOOL

RESIDENTS \$40 : NON-RESIDENTS \$48

Does your child love to Jump and Cheer? If so, then they will love cheerleading! Creative dance moves and low-level stunts will be taught. Participants will be grouped by grade and experience. No uniform or special equipment is needed. This program is Coed. Instructor: Lynn Kynoch, S.B.H.S. Coach

YOUNG REMBRANDTS WINTER GRADES 1-5

232002-A : MARCH 12-APRIL 16 : **DECISION DEADLINE FEBRUARY 26**

MONDAYS : 2:35-4PM : ORCHARD SCHOOL

RESIDENTS \$76 : NON-RESIDENTS \$91

232001-A : MARCH 13-APRIL 17 : **DECISION DEADLINE FEBRUARY 26**

TUESDAYS : 2:35-4PM : CENTRAL SCHOOL

RESIDENTS \$76 : NON-RESIDENTS \$91

Do your kids have cabin fever? Young Rembrandts has the remedy - ART!! In our DRAWING classes, students will complete all original drawings, true artistic techniques and fun skills that will awaken their left and right brains! Sign up today!

YOUNG REMBRANDTS SPRING GRADES 1-5

232002-B : APRIL 30-JUNE 4 : **DECISION DEADLINE APRIL 16**

MONDAYS : 2:35-4PM : ORCHARD SCHOOL

RESIDENTS \$76 : NON-RESIDENTS \$91

232001-B : MAY 1-29 : **DECISION DEADLINE APRIL 16**

TUESDAYS : 2:35-4PM : CENTRAL SCHOOL

RESIDENTS \$76 : NON-RESIDENTS \$91

There's no better way to get a jump on spring than with our fun Young Rembrandts cartoon class. Your student will be exposed to the excitement of drawing and animating dinosaur expressions and funny anime characters. These drawings will delight our students as they learn how to draw dynamic figures and action-filled scenes. Your funny bone will be tickled when you see the humorous, floral-inspired personas created in our flower characters lesson. And we'll have an enormous amount of fun as we draw cartoon animals of all shapes and sizes doing their favorite hobbies. Sign up today!



LACROSSE

YOUTH LACROSSE

CO-ED LACROSSE

CLASS#	PROGRAM NAME	DATE	DAY	FEE R/NR	DECISION DEADLINE
323005-A	KINDERPROS (AGES 5-6)	MAY 2	W	\$40/48	APRIL 18
333016-A	GRADES 1 & 2	MAY 3	TH	\$40/48	APRIL 19

GIRLS LACROSSE

CLASS#	PROGRAM NAME	DATE	DAY	FEE R/NR	DECISION DEADLINE
333015-A	GRADES 3 & 4	APRIL 3	TU, THU	\$100/\$120	MARCH 19
333015-B	GRADES 5 & 6	APRIL 2	M, W, F	\$100/\$120	MARCH 19
333015-C	GRADE 7	APRIL 2	M, W, F	\$100/\$120	MARCH 19
333015-D	GRADE 8	APRIL 2	M, W, F	\$100/\$120	MARCH 19

This league is part of the Northern Vermont Youth Lacrosse League and requires a membership through US Lacrosse prior to registration. Jamborees will take place on five consecutive Sundays starting in May. Travel to jamborees will be required.

REGISTER NOW! SIGN UP AT RECANDPARKS.SBVT.GOV

**VOLUNTEER COACHES
NEEDED!**





GREATER BURLINGTON GIRLS SOCCER LEAGUE

This thriving program gives girls in grades 1-6 the opportunity to build skills and confidence in a fun, supportive environment. Focus of this league is equal playing time, good sportsmanship, and leadership. Go to: www.gbgs.org to register. Spring registration ends March 16, 2018.



SB YOUTH BASEBALL & SOFTBALL

South Burlington Youth Baseball & Softball has been a chartered Little League in South Burlington since 1980. The league serves all male and female youth, league ages* 5 to 12, interested in being taught, not only, the sport of baseball or softball, but also sportsmanship and teamwork. South Burlington Youth Baseball & Softball is an all volunteer organization. Registration begins each year in early February at www.sbybs.com. If you are interested in volunteering with SB Little League, please call 802-859-0627 or send us an email at sblittleleague@comcast.net.



A Local Vermont Real Estate Development and Management Company Serving Our Community Since 1958

1855 Williston Road, P.O. Box 2184, South Burlington VT 05407
(802) 658-5000 • FAX (802) 658-2002

Check Us out on the Web: www.obrienbrothersagency.com

GYMNASTICS COMBO CLASS 343012-C

AGES 7-14 : MAY 2-23 : **DECISION DEADLINE APRIL 18**
WEDNESDAYS : 5:30-7PM : GREEN MOUNTAIN GYM
RESIDENTS \$87 : NON-RESIDENTS \$104

Green Mountain Training Center will cover basic climbing, jumping/vaulting and tumbling techniques to build strength and skills for our parkour/ninja obstacles. They will also be learning aerial awareness and body control on trampolines while practicing skills used in snowboarding and freestyle skiing. Instructors: Green Mountain Training Center

DRIVERS EDUCATION COURSE 241015-52

GRADES 9-12 : MARCH 8-APRIL 19 : **DECISION DEADLINE FEBRUARY 22**
MON, TUE, THUR : 4-5:30P : SBHS
RESIDENTS \$725 : NON-RESIDENTS \$750

This course reflects proven techniques for developing good driving skills and habits. The course consists of 30 hours of classroom instruction, 6 hours of supervised driving, and 6 hours of observation, beyond classroom hours. Meets Mon, Tues. and Thurs. 4:00-5:30 p.m. Instructor: Paul Dudley, Dudley's Driving *Note- \$100.00 deposit is non-refundable in the event of withdrawal from the course.

BABYSITTING CLASS 341000-A

AGES 11-16 : APRIL 24 : **DECISION DEADLINE APRIL 10**
TUES : 8:30AM-3:30PM : FHTMS
RESIDENTS \$105 : NON-RESIDENTS \$126

The Red Cross Babysitter's Training course provides individuals with the information and skills necessary to provide safe and responsible care for children. Training in leadership, professionalism, basic care, safety, safe play and first aid will be covered. Certification cards can take up to three weeks to be delivered to the students. Instructor: Certified ARC Instructor



BOATER'S SAFETY COURSE 311010-A

AGE 12+ : MAY 7-16 : **DECISION DEADLINE APRIL 23**
MON, WED : 6-8:30PM : WILLISTON CENTRAL
RESIDENTS \$15 : NON-RESIDENTS \$15

The Recreation Dept., in conjunction with the VT State Police and CVRA will be offering a Boater Safety Course. The course is open to all youth, (12 years of age and older), teens and adults. The course is 8 hours and is offered over 4 days. Participants must be present at all sessions to be eligible for certification. The course is mandatory for any person, born after January 1, 1974, who will be operating a motorboat on VT waters.

Instructor: John Fick

ADULT FITNESS



JAZZERCISE ADULT PUNCH PASS:

PROGRAM NAME	DAY	TIME
DANCE MIXX	M, W & TH	5:30 PM
LO/LOW	M, W & F	10:00 AM
STRENGTH 45	TU	5:30 PM
EXPRESS/STRENGTH 30	F	5:30 PM
DANCE MIXX	SA & SU	9:30 AM

RESIDENTS \$72 - NON-RESIDENTS \$86
REC & PARKS MULTI-PURPOSE ROOM

The 10 visit punch pass is valid for 3 months and can be purchased at the SB Recreation and Park office. Try Jazzercise now! With our varied formats, fresh new music, and fun moves, you'll never get bored... plus you'll SEE results that will keep you coming back! We are a small boutique with lots of strong, fabulous, fun Jazzerbuddies. Come join us. Enjoy the opportunity to Dance and Workout with us 7 days a week at SBRP all year round. Mats and weights provided, all you need are clean workout shoes to change into at class and a water bottle. At your first class please arrive early to fill out our waiver. Certified Jazzercise Instructors: Kit Sayers, Tamie Jo Dickinson, and Tanya Theriault.

JAZZERCISE – PT BASICS:

SUNDAYS : 10-45AM : REC & PARKS MULTI-PURPOSE ROOM
RESIDENTS \$100 - NON-RESIDENTS \$120

Classes are on-going. Jump in anytime! Make it personal. Take your fitness to the next level with these PT Basic classes. Work your body using weights, resistant tubes and your own body weight. You'll work in small groups doing functional exercise, gaining flexibility and balance while building muscle. Your instructor will assist you with personal attention to help you use correct technique to receive the most from your PT class. Every week we will focus on the total body and include exercises for Lovely Legs or Just Abs or Work your Core or Arm Day. Equipment: Mats and weights available at class. Carry in clean aerobic sneakers to change into for class. Certified Jazzercise Instructor: Kit Sayers

HATHA YOGA:

CLASS#	DATE	DAY	TIME	FEE R/NR	LOCATION	DECISION DEADLINE
155001-A	2/6-3/13	Tu	6:30-8P	\$74/\$89	Rec Dept	Feb 5
155001-B	3/27-5/1	Tu	6:30-8P	\$74/\$89	Rec Dept	March 13
155001-C	5/15-6/19	Tu	6:30-8P	\$74/\$89	Rec Dept	May 1

Experience a yoga class which integrates grounding postures (asanas) and breathing techniques (pranayama) with awareness, culminating in a deep restful relaxation (savasana). Appropriate for beginners, all bodies and ages. All classes are created in accordance with life's rhythms and transitions.

ADULT GOLF CLINICS

AGES 18+

CLASS#	DATE	DAY	TIME	FEE R/NR	LOCATION	DECISION DEADLINE
353002-A	4/10-5/8	TU	5:30-6:45P	\$150/\$180	CATAMOUNT	MARCH 27
353002-D	4/12-5/10	TH	5:30-6:45P	\$150/\$180	CATAMOUNT	MARCH 29
353002-E	5/15-6/12	TU	6-7:15P	\$150/\$180	CATAMOUNT	MAY 1
353002-F	5/16-6/13	W	6-7:15P	\$150/\$180	CATAMOUNT	MAY 2
353002-G	6/19-7/17	TU	6-7:30P	\$150/\$180	CATAMOUNT	JUNE 5
353002-H	6/20-7/18	W	6-7:30P	\$150/\$180	CATAMOUNT	JUNE 6

The goal is to introduce the game of golf to Beginners (353002-A & E) in a fun, active setting. Beginners and Adv. Beginners (353002-D & G) will transition from the introduction of the game of golf to the next level. Adv. Beginners and Intermediate (353002-F & H) golfers work in groups to attain their goals of bringing their game to the next level, tee to green.

Instructor: Dan Lehmann, PGA Professional

ADULT OPEN GYMS:

OUTDOOR PICKLEBALL

FREE
AGES: 18+, COED
MAY – OCTOBER
SZYMANSKI PARK
WEDNESDAYS 9:00-11:00 AM
WEDNESDAYS 6:00-8:00 PM

MEN'S BASKETBALL 18+

\$2 PER GAME/PER PERSON
AGES: 18+
SEPTEMBER – JUNE
LOCATION VARIES BY SCHEDULE
SUNDAYS 10:00 AM-12:00 PM

INDOOR PICKLEBALL

\$2 PER GAME/PER PERSON
AGES: 18+, COED
DATES, TIME & LOCATION TBD
***CHECK WEBSITE FOR INFO**

MEN'S BASKETBALL 35+

\$2 PER GAME/PER PERSON
AGES: 35+
SEPTEMBER – JUNE
LOCATION VARIES BY SCHEDULE
FRIDAYS 6:30-8:30 PM

VOLLEYBALL

\$2 PER GAME/PER PERSON
AGES: 18+, COED
SEPTEMBER – JUNE
LOCATION VARIES BY SCHEDULE
WEDNESDAYS 7:00-9:00 PM

WILLS FOR PARENTS OF MINOR CHILDREN AGES 18+

352011-A COUPLES : APRIL 3 & 17 : DECISION DEADLINE MARCH 20
TUESDAYS : 7-8:30PM : JARRETT/LUITJENS LAW
RESIDENTS \$380 : NON-RESIDENTS \$380

352011-B INDIVIDUALS : APRIL 3 & 17 : DECISION DEADLINE MARCH 20
TUESDAY : 7-8:30PM : JARRETT/LUITJENS LAW
RESIDENTS \$255 : NON-RESIDENTS \$255

Would you like to walk away from a course with a fully executed, customized legal document instead of just learning about it? As a service to the community, Jarrett & Luitjens, PLC, is offering their professional services at a fraction of the cost of private “in office” counsel. Instructor Jennifer R. Luitjens, Esq will explain the legal process involved when parents die leaving minor children during the first session and provide customized Wills for participants during the second session. If registering as a married couple, both must attend both sessions; only unmarried individuals may register as a single. Instructor Jennifer R. Luitjens, Esq., Jarrett & Luitjens, PLC

SUCH A VOICE- VOICE OVERS 251001-A

AGES 18+ : MARCH 8 : DECISION DEADLINE FEBRUARY 22
THURSDAY : 6:30-8:30PM : REC DEPT
RESIDENTS \$35 : NON-RESIDENTS \$35

You’ve heard Brian Thon on TV and radio commercials! His voice can be heard on work from professional sports teams, Fortune 500 companies, GE Healthcare and Fox News. Hear him live as he illustrates how you could actually begin using your speaking voice for commercials, film and videos! This class could be the game changer you’ve been looking for.

INVESTING 101 351010-A

AGES 18+ : FEB 14-APRIL 11 : DECISION DEADLINE FEBRUARY 7
WEDNESDAYS : 6:30-7:30PM : SBHS
RESIDENTS \$10 : NON-RESIDENTS \$10



In this 8-week financial workshop we will cover the key principles of saving and investing. You will also learn specific strategies to help you reach your long-term financial goals. Instructor Mike Kiessling is a Financial Advisor with Edward Jones.

GUIDED IMAGERY 355025-A

AGES 18+ : FEB 16-MARCH 2 : DECISION DEADLINE FEBRUARY 9
FRIDAYS : 7-8:15PM : REC DEPT
RESIDENTS \$55 : NON-RESIDENTS \$66



By focusing on imagery, we all have the potential to create a new reality within ourselves. Each workshop will start with exercises to bring awareness to our body, our heart and or own breath. Then we have the opportunity to experience relaxation through Guided Imagery using suggested metaphorical images. All you need to do is to get comfortable, relax and let go. Bring your own yoga/exercise mat, blanket or cushions.

FELINE BEHAVIOR 352010-A

AGES 18+ : APRIL 11 : DECISION DEADLINE MARCH 28
WEDNESDAY : 6:30-8:30PM : CITY HALL
RESIDENTS \$10 : NON-RESIDENTS \$10




Cat guardians love their cats but often find their behavior puzzling. If you have cats and cat questions this is the workshop for you! Elizabeth Lewellyn, Feline Welfare and Behavior Specialist, will answer your questions and offer advice on common issues such as aggression, house soiling and environmental enrichment.

WATERCOLOR AT WHEELER

CLASS#	DATE	DAY	TIME	FEE R/NR	LOCATION	DECISION DEADLINE
352000-A	5/17	Th	10:30A-12P	\$9/\$9	Wheeler House	May 3
352000-B	5/24	Th	10:30A-12P	\$9/\$9	Wheeler House	May 10
352000-C	5/31	Th	10:30A-12P	\$9/\$9	Wheeler House	May 17
352000-D	6/7	Th	10:30A-12P	\$9/\$9	Wheeler House	May 24
352000-E	6/14	Th	10:30A-12P	\$9/\$9	Wheeler House	May 31
352000-F	6/21	Th	10:30A-12P	\$9/\$9	Wheeler House	June 7

Come and explore the many possibilities of painting in watercolors with Senior Program Coordinator Kathleen Cote. She will show you how to use the materials through demonstration and instruction. Watercolors are a fluid, flexible and fascinating medium!



55+ BUS TRIPS

MAPLE SUGAR HOUSE TRIP 261005-I **AGES 55+ : MARCH 29 : DECISION DEADLINE MARCH 15** **THURSDAY : 10AM-2PM : CITY HALL** **RESIDENTS \$35 : NON-RESIDENTS \$45**

The sweet flow of sap only happens for 4-6 weeks between winter and spring, and we don't want to miss what happens during Vermont's sweetest season. We will visit a local sugar house to see the process and enjoy a taste of one of Vermont's sweetest treats! Lunch on the way home will round out this tasty trip.



MYSTERY TOUR & LUNCH 261005-J **AGES 55+ : MAY 8 : DECISION DEADLINE APRIL 24** **TUESDAY : 10AM-2PM : CITY HALL** **RESIDENTS \$35 : NON-RESIDENTS \$45**

Hop onboard our bus for a tour that is sure to be engaging and fun! Where will we end up? You'll have clues along the way to try to figure out our destination. Lunch is included and will be sure to delight!

VERMONT STATE HOUSE TRIP 261005-K **AGES 55+ : JUNE 12 : DECISION DEADLINE MAY 29** **TUESDAY : 9:30AM-2PM : CITY HALL** **RESIDENTS \$40 : NON-RESIDENTS \$50**

Enjoy a guided tour of the Vermont State House in Montpelier, learning the history and seeing the majesty of this landmark building. After the tour, we will enjoy lunch as we venture home.

MONUMENT FARMS TOUR 261005-L **AGES 55+ : JULY 24 : DECISION DEADLINE JULY 10** **TUESDAY : 9AM-2PM : CITY HALL** **RESIDENTS \$40 : NON-RESIDENTS \$48**

We will take a walking tour of the barn and plant operated and managed by the James and Rooney families. Monument Farms is a 720-head dairy and milk processing business and is an institution in Addison County. Three generations have carried on the dairying tradition that began in 1930. After our tour, we will enjoy a delightful lunch in Middlebury before venturing home.

LAKE CHAMPLAIN MARITIME MUSEUM 261005-H **AGES 55+ : AUGUST 23 : DECISION DEADLINE AUGUST 9** **THURSDAY : 9:30AM-3PM : CITY HALL** **RESIDENTS \$45 : NON-RESIDENTS \$55**

Put on your walking shoes as we explore the museum in Vergennes. The Lake Champlain Maritime Museum uses the active discovery and care of Lake Champlain's maritime heritage and environment as a launching pad to inspire life-long learning through hands-on, mind-on experiences. After our visit to the museum, we will enjoy a delicious lunch at the Red Mill Restaurant.

YOUNG AT HEART CLUB

WEDNESDAYS : NOON-3:30PM : SB CITY HALL

Possible program activities can include: Speakers, Bingo, Movie Matinee, Concert, Health & Wellness, Games, and more! We will meet each Wednesday for a meal at noon and free program. We look forward to this exciting opportunity to stay connected all year round! Our senior schedule is bursting with variety, based out of City Hall. We begin with a SB School District meal that can be purchased for \$4.00 per meal. You must pre-register for your meal one week in advance.

LIVING STRONG

AGES 50+ : YEAR ROUND : TUESDAYS & THURSDAYS : 9:00-10:00AM : REC. DEPT.

This strength training program is intended for older adults age 50 and up, and is appropriate for anyone wanting to increase their upper and lower body strength, improve balance, agility, flexibility and quality of life. Age Well received a grant to pay for the certification for volunteers to be trained as leaders. Capacity of this class is limited. Please inquire about space availability with the Recreation Department.

WHEELER WALKING GROUP 165000-A

AGES 55+ : MAY 10-JUNE 14

THURSDAYS : 9-10AM : WHEELER HOUSE

Based out of the beautiful Wheeler House, Join us for a walk on our paved rec path for 6 consecutive Thursday mornings. Come enjoy the beautiful vistas, great company and an occasional special guest. Guide: Kathleen Cote



JAZZERCISE LO/LOW

AGE: 18+ : YEAR ROUND : MONDAYS, WEDNESDAYS & FRIDAYS

10:00-11:00AM : SB CITY HALL : RESIDENTS \$32 - NON-RESIDENTS \$37

It's a Low impact, less intense with plenty of energy style class. Chairs are used during strength or as needed. Carry in light weights, water & clean workout shoes to change into prior to class. This class is ideal for the active older adult, people with balance issues, arthritis, recovering from surgery, pregnant, just starting out, or just not ready for the higher impact/intense dance moves & strength workout.

TAI CHI

AGE 55+ : TUESDAYS : 10:30AM-12:00PM

DROP-IN PROGRAM



Tai Chi originated in ancient China and is practiced for its health benefits throughout the world by people of all ages. Slow, gentle and relaxed movements are combined with focused, deep breathing. It can be done standing or sitting by just about anyone in any location's chi enhances relaxation and focus, reduces pain and stiffness, increases balance and strength, and can even relieve some symptoms of insomnia and depression. Join us for this free health and wellness opportunity!



Paws in the Park

With the implementation of a new dog park amenity at Farrell, we look to service our population of people and pets to create a healthy community.

Dog parks can act as a gathering spot for pet parents. They bring their pets to the park to get exercise and socialize with other pets. Dog owners do the same thing. While the dogs are playing, community members are more likely to form relationships, participate

in conversation and exchange community information such as events, doctors, and veterinarians.

Public dog parks allow dogs to get ample off-leash exercise and social activity with other dogs. When dogs get the adequate physical and mental exercise they need, humans are able to notice a decrease in the level of troublesome behavior from their dogs which will benefit society as well.

PET FRIENDLY = PEOPLE FRIENDLY

- Higher Property Values
- Increased livability in areas that are densely populated with small yards
- Discouraging crime and loitering in neighborhoods

PETS LOVE:

- Happiness from being well-exercised
- Coming home less likely to bark and disturb a neighbor
- Improving communication skills with new pups
- Mental stimulation along with physical activity
- Learning about different types of dogs and smells that eliminate fear
- Fewer owner surrenders due to bad behavior
- More dog adoptions in the community = more friends
- Less obesity and inactivity

COMMUNITY MEMBERS LOVE:

- Socialization and meeting friends
- A place for community dog activities
- Increased tourism of pet travelers
- Provision of green space
- The opportunity to learn about pets and training from fellow pet owners

DOG COMMUNICATION IN THE HUMAN WORLD 351004-A

14+ : MARCH 20 : **DECISION DEADLINE MARCH 6**
TUESDAYS : 6-7:30PM : WILLISTON CENTRAL
RESIDENTS \$10 : NON-RESIDENTS \$10

Is a yawn always just a yawn? Why do dogs shake off even when not wet? Is a growl a good thing? This popular dog communication and safety lecture is a multi-media of fun where the audience gets to test their “dog reading” skills. We’ll demystify dog communication, reveal some common dog-human misunderstandings, and explore how we can all live happily together. This is for humans only- dog owners or not. Presenter: Deb Helfrich, Gold Star Dog Training

DOG/PUPPY BASIC TRAINING 251006-F

18+ : APRIL 6 - MAY 11 : **DECISION DEADLINE MARCH 23**
FRIDAYS : 5:30-6:30PM : SB CITY HALL
RESIDENTS \$125 : NON-RESIDENTS \$150

Suitable for dogs 10 weeks and older. This 6-week basic class covers all you need to understand your dog, have a well-behaved dog, and bond with your dog.

BEYOND BASICS DOG TRAINING 251006-E

18+ : APRIL 6 - MAY 4 : **DECISION DEADLINE MARCH 23**
FRIDAYS : 6:45-7:45PM : SB CITY HALL
RESIDENTS \$120 : NON-RESIDENTS \$144

This class takes your training to the next level, because we teach various levels of a given exercise, based on where your dog is at. The emphasis is on what you want to achieve with your dog within the exercises we teach, and giving you the instruction and proper exercises to achieve your goals.



Summer Camps



As the snow flies it is hard to think that the warm summer months will soon be upon us. Sandy toes, sun-kissed cheeks, and bountiful smiles are hallmarks of traditional Vermont summers. Packed within the pages you will find a multitude of fun and engaging camps to entertain your youngster throughout the out of school summer break.

Based on our success of seasons past, we have planned out options that appeal to various interests and have mixed both ½ day and all day camp options.

As you browse you will find new and exciting offerings for everything from STEM based Quadcopter Creation to Orienting and Wilderness Survival. Staples of our summer

is known for. We are thankful to host many of these camps right in our own parks and intend to make full use of all the many natural resources South Burlington has to offer. When necessary, indoor space will be utilized at both Tuttle Middle School and the Wheeler House, both conveniently located on Dorset Street.

What you won't see are our traditional day camp offerings of Lil' Tykes and Jr Rec. For several years we have been sustaining these recreation based camps for our community and have continued to add enhancements to prototype the ideal camp scenario. Having met with great success on a small scale, we have been working collaboratively with the school district to fold what we have developed into their wide reaching out-of-school summer program: School's Out.

This summer the School's Out program will include many of the most popular elements of our traditional recreation camp such as daily meals, free tennis with Kids on the Ball, community-based performances, park tours, nature walks and even kayaking. Combined with the already stellar programming that School's Out is known for, this is sure to be a top-notch summer option.

With sites opening at all three of our South Burlington elementary schools and the addition of a pre-school camp at Chamberlin School, it is sure to be a full and busy summer indeed. All School's Out programs are State of Vermont licensed, which means that those who qualify can access Child Care Resources funding for financial assistance.

We are happy to support and promote the following School's Out mission:

School's Out will provide children a safe environment where they are given an opportunity to express themselves and develop socially, physically, academically, emotionally, and creatively through a program that nurtures and respects the uniqueness of each child. Activities will inspire children to love to learn, explore interests, and develop character. We will collaborate with school, family and children to ensure we are providing the best possible program to meet the needs of each child at the level that is developmentally appropriate for them.

For more information visit
www.sbschools.net/domain/62



program still include a variety of sport, nature, art and computer based camps that our recreation department

SPECIALTY CAMPS



ROCKETRY CAMP 434502-A
COMPLETED GRADES 3-6 : JULY 16-20 : DECISION DEADLINE JUNE 16
MONDAY-FRIDAY : 8:30AM-12PM : FHTMS
RESIDENTS \$280 : NON-RESIDENTS \$335

Build, test, and launch solid propellant rockets that safely return by parachute. Learn the aerodynamics of rocket flight and create a six-foot-tall experimental rocket with your team. Campers will leave class with rockets that they have launched and can launch again. This is a high-flying camp! Materials included. Director: Bob Gurwicz

RED ROCKS NATURE CAMP GRADES K-5

CLASS#	DATE	DAY	TIME	FEE R/NR	LOCATION	DECISION DEADLINE
434203-A	7/9-7/13	M-F	9AM-3:30PM	\$285/285	Red Rocks Park	June 9
434203-B	7/30-8/3	M-F	9AM-3:30PM	\$285/285	Red Rocks Park	June 30

Connect with your wild side for a full week exploring the woods and waters of Red Rocks Park. We'll discover all the secret corners of the park as we build forts and fairy houses, practice sneaking and camouflage, make nature art, track animals, whittle, and spend plenty of time swimming and playing water games. **NOTE** For more details and to register, please visit www.crowspath.org

CLAYMATION MOVIE MAKING 434505-B
COMPLETED GRADE 3-10 : JUNE 25-29 : DECISION DEADLINE MAY 25
MONDAY-FRIDAY : 8:30-12PM : FHTMS
RESIDENTS \$170 : NON-RESIDENTS \$204

Throughout this week-long camp, participants will engage in a fun, hands-on experience to create Claymation videos. Participants will create clay characters, learn to storyboard and build scenery to make their own movies using digital cameras and movie-making software. Final videos will be saved electronically as a take-home keepsake for participants.



YOUNG REMBRANDTS ART CAMPS AGES 6-11

CLASS#	DATE	DAY	TIME	FEE R/NR	LOCATION	DECISION DEADLINE
434406-A	7/9-7/13	M-F	8:30A-12P	\$140/\$168	FHTMS	June 9
434406-B	7/9-7/13	M-F	1-4:30P	\$140/\$168	FHTMS	June 9
434406-C	8/6-8/10	M-F	8:30A-12P	\$140/\$168	FHTMS	July 6
434406-D	8/6-8/10	M-F	1-4:30P	\$140/\$168	FHTMS	July 6

Young Rembrandts teaches the drawing skills children need while developing and learning skills that give children an academic advantage in the classroom. A colorful selection of drawing lessons introduces young artists to a fascinating world of color, pattern, and design. Each session has a different theme. For more details, visit recandparks.sbvt.gov

SURVIVOR CAMP 234015-A
GRADES 1-5 : JULY 16-20 : DECISION DEADLINE JUNE 16
MONDAY-FRIDAY : 8:30AM-12PM : FHTMS
RESIDENTS \$130 : NON-RESIDENTS \$156



Come take part in mental, physical, creative and teamwork based challenges, earning points for your tribe. This camp will take place in the woods, atop a mountain, in our parks and on the water. Be a Summer Survivor

NINJA PARK WARRIOR 434401-A
GRADES 1-5 : JULY 16-20 : DECISION DEADLINE JUNE 16
MONDAY-FRIDAY : 1-4:30PM : FHTMS
RESIDENTS \$120 : NON-RESIDENTS \$144



Ninja Park Warriors will compete as individuals for points (within age groups) throughout the week for prizes. NPW's will visit and compete in all SB parks. Challenges will take place on land and on the water. Participants will help to design exciting challenge courses daily.

GIRLS SPIRIT CAMP 434407-A
AGES 6-12 : JULY 23-27 : DECISION DEADLINE JUNE 23
MONDAY-FRIDAY : 8:30AM-12PM : FHTMS
RESIDENTS \$150 : NON-RESIDENTS \$180

"Calling all girls! " Do you enjoy playing, dancing, creating and relaxing? Girls unite to explore creative yoga, tumbling and dance in a joyful, fun-filled week-long camp. We will explore yoga postures and games, cooperation and trust activities and express ourselves through beautiful craft making fostering self-confidence, self-expression and positive self-image where every girl is a WINNER! Girls experience the joy and freedom of being in their body, they deepen their connection with the world around them, and they celebrate their individuality and uniqueness! *No special skills required girls! Just come as you (perfectly) are!" Director – Sylvia Kabusk

SPECIALTY CAMPS

FABULOUS FIELD TRIPS GRADES 5-8

444101-A : JULY 2-6 : **DECISION DEADLINE JUNE 2**
 M, TU, TH, F : 8:30AM-4:30PM : FHTMS
 RESIDENTS \$160 : NON-RESIDENTS \$175

444101-B : AUGUST 13-17 : **DECISION DEADLINE JULY 13**
 MONDAY-FRIDAY : 8:30AM-4:30PM : FHTMS
 RESIDENTS \$200 : NON-RESIDENTS \$240

Who doesn't like a field trip? Come join our summer staff for a fun-filled week of field trips. Campers will have the opportunity to experience all that our area has to offer. Each day will begin with a group challenge before heading out by bus to a special location. Each day will be a unique trip, no two days will be the same. There are many exciting opportunities in and around VT and this camp will take advantage of many of them.

COMMON GROUND DAY CAMP 343013-A
 GRADES K-6 : JULY 16-20 : **DECISION DEADLINE JUNE 16**
 MONDAY-FRIDAY : 8AM-5PM : CITY HALL
 RESIDENTS \$280 : NON-RESIDENTS \$280



Come to Common Ground Center for a week of outdoor adventure in July! With over 700 acres of fields, forests and meadows to explore we will focus on nature exploration, artistic expression, cooperation and overall fun! Activities at this co-ed camp will include: swimming, arts & crafts, archery, wilderness skills, hiking, basketball, tennis, music and much more! Transportation to/from SBRP included.

CAMP CONNECT AGES 11-15

CLASS#	DATE	DAY	TIME	FEE R/NR	LOCATION	DECISION DEADLINE
434100-A	7/23-7/27	M-F	9AM-4PM	\$255/\$306	Wheeler House	June 23
434100-B	7/30-8/3	M-F	9AM-4PM	\$255/\$306	Wheeler House	June 30

Wonder. Explore. Create. Play. Connect! This empowering three-week camp program offers a unique place-based experience that connects girls with nature, promotes self-confidence, nurtures friendships, and creates community. Set among 100-plus acres at Wheeler Nature Park, our camp day begins with a special guest — a community leader who engages campers in questions to ponder, projects to work on, adventures to take. Campers are invited to stretch their minds and muscles with activities that



TWEEN/TEEN CAMPS

VERMONT STATE PARKS TOUR 434501-A

GRADES 5-8 : JUNE 18-22 : **DECISION DEADLINE MAY 18**

MONDAY-FRIDAY : 9AM-4PM : FHTMS

RESIDENTS \$180 : NON-RESIDENTS \$200



Jump into summer by joining our staff on a tour of several VT State Parks. We'll board our bus and head to a different VT State Park each day. There will be games, challenges and various activities in the park each day. It's sure to be a fantastic start to the summer season!

ON THE GO CAMP GRADES 5-8

CLASS#	DATE	DAY	TIME	FEE R/NR	LOCATION	DECISION
434205-A	6/25-6/29	M-F	8:30AM-4:30PM	\$255/\$270	FHTMS	May 25
434205-B	7/9-7/13	M-F	8:30AM-4:30PM	\$255/\$270	FHTMS	June 9
434205-C	7/23-7/27	M-F	8:30AM-4:30PM	\$255/\$270	FHTMS	June 23
434205-D	8/6-8/10	M-F	8:30AM-4:30PM	\$255/\$270	FHTMS	July 6

Join our Adventure Staff and challenge the great outdoors in these one-week camps full of Outdoor Ultimate Recreation. Each week will include hiking, biking, kayaking, teambuilding and a special trip. The specific make-up of each week is derived from the cooperative planning of the campers and counselors. No two weeks are the same! Counselors: Rec. Staff

FISHING CAMP 434202-A

AGES 10-15 : JULY 30-AUGUST 3 : **DECISION DEADLINE JUNE 30**

MONDAY-FRIDAY : 8:30AM-12PM : FHTMS

RESIDENTS \$160 : NON-RESIDENTS \$192

Learn new fishing skills from a professional fishing guide! Uncle Jammer's Guide Service will teach you how to catch fish with lures, bait and flies. Practice your abilities while fishing local hot spots and earn a VT Fish and Wildlife "Let's Go Fishing" certificate." All equipment, materials and transportation provided by van to fishing locations. Director: Mark Wilde, Uncle Jammers Guide Service

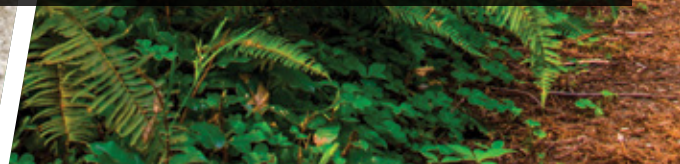
CSI CAMP 434404-A

GRADES 6-9 : JULY 16-20 : **DECISION DEADLINE JUNE 16**

MONDAY-FRIDAY : 9AM-3PM : FHTMS

RESIDENTS \$100 : NON-RESIDENTS \$120

Work with the Youth Services Division of the South Burlington Police Department to learn skills on how to solve crimes. You will learn Crime Scene fingerprinting, photography, evidence collection, and at the end of the week process a mock crime scene. We will also have special guests throughout the week who specialize in other areas of law enforcement.



BASKETBALL SQUIRTS 434300-P

AGES 3-5 : JULY 16-20 : DECISION DEADLINE JUNE 16

MONDAY-FRIDAY : 5-6PM : FHTMS

RESIDENTS \$75 : NON-RESIDENTS \$90



USSI Basketball Squirts program for ages 3-5 is designed to introduce your budding NBA star to the high energy game of basketball. Using proportionately sized basketballs, this program encourages players to develop motor skills and basic technique in passing, dribbling and shooting. Players will be taught through a series of fun challenges, structured activities and scrimmages. Instructors: US Sports Institute

TRACK AND FIELD 333025-A

AGES 7-14 : JUNE 18-JULY 21 : DECISION DEADLINE JUNE 6

MONDAY, WEDNESDAY, FRIDAY : EVENING : SBHS TURF

RESIDENTS \$55 : NON-RESIDENTS \$66

Youngsters will train in both track and field events and compete in two state track meets, as well as dual meets with other area Recreation Depts. Age eligibility for this program is based on child's age as of Aug. 31, 2018. Coaches: Rec. Staff

BASEBALL CAMP 434300-N

AGES 5-12 : JULY 9-13 : DECISION DEADLINE JUNE 9

MONDAY-FRIDAY : 9AM-12PM : VET MEMORIAL

RESIDENTS \$125 : NON-RESIDENTS \$150

Join camp Director Ed Hockenbury and a quality staff of coaches and players for a fun week of baseball at Veterans Memorial Park. The camp features age-appropriate instruction in baseball fundamentals, and all campers will play a game every day. Players will learn about fielding, pitching, hitting, throwing, baserunning, and rules, from quality instructors in an atmosphere that is safe, fun and engaging.

MULTI-SPORT SQUIRTS 434300-S

AGES 3-5 : JULY 16-20 : DECISION DEADLINE JUNE 16

MONDAY-FRIDAY : 5-6PM : FHTMS

RESIDENTS \$75 : NON-RESIDENTS \$90



USSI's Multi Sports Squirts program allows children aged 3-5 to experience a different sport in each session of the program. It is the perfect introduction to athletics for your future sports star! All sports are taught in a safe, structured and fun learning environment. Each session is comprised of a series of games and activities designed to ensure learning and most importantly: fun, fun, fun! Participants will have the opportunity to experience Lacrosse, Soccer, Basketball, T-Ball, Track & Field, Hockey & Flag Football.

FOUNDATION BASKETBALL 434300-R

AGES 5-14 : JULY 16-20 : DECISION DEADLINE JUNE 16

MONDAY-FRIDAY : 9AM-12PM : FHTMS

RESIDENTS \$155 : NON-RESIDENTS \$186



This program is the first level in USSI sports coaching. Sessions are developed through a series of fun activities that teach basic skills in a fun and safe environment. Instructors: US Sports Institute

DEVELOPMENT BASKETBALL 434300-Q

AGES 5-15 : JULY 16-20 : DECISION DEADLINE JUNE 16

MONDAY-FRIDAY : 1-4PM : FHTMS

RESIDENTS \$155 : NON-RESIDENTS \$186



This basketball class is open to first time players and those with experience who are looking to gain a strong understanding of the sport. This program will include a more skill based training schedule with scrimmages to end. Instructors: US Sports Institute



SPORTS CAMPS



GOLF CAMPS

Campers will learn the fundamentals of golf on our two-tiered driving range and multiple greens. Our goal is to introduce the game in a fun, active setting. Catamount junior golf will be led by PGA professional Dan Lehmann in 2018. Dan has more than 20 years of experience in creating and teaching junior golf programs and was twice named PGA Junior Promoter of the Year. It's going to be a great year with lots of new and fun ways to learn golf.

HALF DAY AGES 8-14

CLASS#	DATE	DAY	TIME	FEE R/NR	LOCATION	DECISION DEADLINE
434301-A	6/18-6/22	M-F	8:30AM-12PM	\$210/\$252	CATAMOUNT	May 18
434301-B	6/25-6/29	M-F	8:30AM-12PM	\$210/\$252	CATAMOUNT	May 25
434301-C	7/9-7/13	M-F	8:30AM-12PM	\$210/\$252	CATAMOUNT	June 9
434301-D	7/16-7/20	M-F	8:30AM-12PM	\$210/\$252	CATAMOUNT	June 16
434301-E	7/23-7/27	M-F	8:30AM-12PM	\$210/\$252	CATAMOUNT	June 23
434301-F	7/30-8/3	M-F	8:30AM-12PM	\$210/\$252	CATAMOUNT	June 30

FULL DAY AGES 11-14

CLASS#	DATE	DAY	TIME	FEE R/NR	LOCATION	DECISION DEADLINE
434301-G	6/18-6/22	M-F	8:30AM-4:30PM	\$395/\$474	CATAMOUNT	May 18
434301-H	6/25-6/29	M-F	8:30AM-4:30PM	\$395/\$474	CATAMOUNT	May 25
434301-I	7/9-7/13	M-F	8:30AM-4:30PM	\$395/\$474	CATAMOUNT	June 9
434301-J	7/16-7/20	M-F	8:30AM-4:30PM	\$395/\$474	CATAMOUNT	June 16
434301-K	7/23-7/27	M-F	8:30AM-4:30PM	\$395/\$474	CATAMOUNT	June 23
434301-L	7/30-8/3	M-F	8:30AM-4:30PM	\$395/\$474	CATAMOUNT	June 30

SOCCER CAMP 434300-K

COMPLETED GRADES 1-7 : JULY 30-AUGUST 3 : **DECISION DEADLINE JUNE 30**
 MONDAY-FRIDAY : 8:30AM-12PM : FHTMS
 RESIDENTS \$135 : NON-RESIDENTS \$155

Players of all levels learn fundamental soccer skills in a fun and positive environment. Each day campers build confidence through individual skill training and small sided games. The week culminates with our very popular Junior World Cup tournament! Directed by Kelly Knudsen, former collegiate and SBHS soccer coach.

ARCHERY CAMP 434300-L

GRADES 3-8 : JULY 30-AUGUST 3 : **DECISION DEADLINE JUNE 30**
 MONDAY-FRIDAY : 1-4:30PM : FHTMS
 RESIDENTS \$135 : NON-RESIDENTS \$162

Join this fun interactive camp and learn the sport of Archery. Participants will learn to aim, shoot, and score, as they develop the skills to become top notch archers. This sport is shooting up in popularity and is both an individual and team sport. Come experience archery first hand. Instructors-Rec. Staff



GREEN MOUNTAIN PASSPORT

The Green Mountain Passport is available for both Seniors and Veterans. To be eligible for a passport, a person must be a legal resident of Vermont and either 62 years of age or older, or a Veteran of the uniformed services. To obtain a passport you need to go to your local Clerk's Office. There is a one time fee of \$2.00 for the passport. There is an option to have the card laminated for an additional \$2.00. The passport provides free admission to Vermont State Parks, Vermont Historic Sites, events which are fully State sponsored, and into Red Rocks Park.

AMUSEMENT PARK TICKETS

Tickets Available for Purchase May — August

The Great Escape & Splashwater Kingdom
Six Flags New England
Bromley Mountain

South Burlington Recreation & Parks, in conjunction with the Vermont Recreation and Parks Association, is selling discount tickets and parking passes to the following amusement parks: The Great Escape & Splashwater Kingdom, Six Flags New England, and Bromley Sun Mountain Adventure Park. Tickets are valid for the 2018 season. Tickets may be purchased Monday - Friday, 8:00 am-4:30 pm at the Recreation & Parks Office, 575 Dorset Street. At time of printing the discounted prices were not available, please look at our May issue for prices.

LIBRARY PASSES

The South Burlington Public Library, temporarily located at the northern most end of the University Mall, currently has one-day family passes for Shelburne Farms, Lake Champlain Maritime Museum, Vermont State Historic Sites, Birds of Vermont Museum and Vermont's History Museum. The Library also has a pass for the Echo Leahy Center for Lake Champlain. This pass provides reduced admission prices for parties of up to four people and a pass for Shelburne Museum for half-price admission for two adults and accompanying children 17 and under. A pass for free admittance for two adults for Elder Education Enrichment lectures is also available. The Vermont State Department of Libraries and the Department of Forests, Parks, & Recreation have co-sponsored the donation of a free State Parks Day Pass to every library in Vermont. The library pass admits one vehicle holding up to eight people to a Vermont State Park Day Area for one day.

Passes may be used by South Burlington residents with a South Burlington library card.



QUICK GUIDE TO EVENTS & PROGRAMS

START DATES	PROGRAM	TIME	DAY	PAGE #
YOUTH PROGRAMS				
March 10	Indoor Soccer	8:30-11 am	Sa	10
March 10	Young Athletes Program	11 am-12 pm	Sa	10
March 12	Young Rembrandts - Orchard School	2:35-4 pm	M	11
March 13	Young Rembrandts - Central School	2:35-4 pm	Tu	11
March 20	Floor Hockey	6-8 pm	Tu	11
March 31	Youth Gymnastics	10:45-11:45 am	Sa	10
April 2	Girls Lacrosse (Gr. 5, 6, 7, and 8)	Time Varies	Day Varies	12
April 3	Girls Lacrosse (Gr. 3 & 4)	Time Varies	Day Varies	12
April 21	Tykes Baseball Clinic	8:30-9:30 am	Sa	10
April 21	Field Hockey	9:45-10:45 am	Sa	11
April 30	Young Rembrandts - Orchard School	2:35-4 pm	M	11
May 1	Young Rembrandts - Central School	2:35-4 pm	Tu	11
May 2	KinderPros Lacrosse	TBD	W	12
May 3	Coed Lacrosse (Gr. 1 & 2)	TBD	Th	12
May 8	Learn Viola!	7-8 pm	Tu	11
June 11	Track & Field	TBD	M, W, F	23
July 10	Youth Golf Clinic (Ages 5-7)	4-4:45 pm	Tu	10
July 11	Youth Golf Clinic (Ages 8-11)	5-5:45 pm	W	10
TWEEN/TEEN PROGRAMS				
March 8	Drivers Education Course	4-5:30 pm	M, Tu, Th	13
April 24	Babysitting Class	8:30 am-3:30 pm	Tu	13
May 2	Combo Freestyle	5:30-7 pm	W	13
May 7	Boater's Safety Course	6-8:30 pm	M, W	13
ADULT FITNESS PROGRAMS				
February 5	Jazzercise Dance Mixx — Year Round	5:30 pm	M, W, Th	14
February 5	Jazzercise Dance Mixx LO/Low — Year Round	10 am	M, W, F	17
February 6	Jazzercise Strength 45 — Year Round	5:30 pm	Tu	14
February 6	Hatha Yoga	6:30-8 pm	Tu	14
February 9	Jazzercise Express/Strength 30 — Year Round	5:30 pm	F	14
February 10	Jazzercise Dance Mixx — Year Round	9:30 am	Sa, Su	14
February 11	Jazzercise PT Basics — Year Round	10:45 am	Su	14
March 27	Hatha Yoga	6:30-8 pm	Tu	14
April 10	Beginner Golf Clinic	5:30-6:45 pm	Tu	14
April 12	Beginners & Advance Beginners Golf Clinic	5:30-6:45 pm	Th	14
May 15	Beginner Golf Clinic	6-7:15 pm	Tu	14
May 15	Hatha Yoga	6:30-8 pm	Tu	14
May 16	Adv. Beginner & Intermediate Golf Clinic	6-7:15 pm	W	14
June 19	Beginner & Adv. Beginner Golf Clinic	6-7:15 pm	Tu	14
June 20	Adv. Beginner & Intermediate Golf Clinic	6-7:15 pm	W	14
ADULT PROGRAMS				
February 14	Investing 101	6:30-7:30 pm	W	15
February 16	Guided Imagery	7-8:15 pm	F	15
March 3	Wills for Parents of Minor Children	7-8:30 pm	Tu	15
March 8	Voice Overs	6:30-8:30 pm	Th	15
April 6	Dog/Puppy Basic Training	5:30-6:30 pm	F	19
April 6	Beyond Basics Dog Training	6:45-7:45 pm	F	19
April 11	Feline Behavior	6:30-8:30 pm	W	15
May 17	Watercolor at Wheeler — Multiple Sessions	10:30 am-12 pm	Th	15

QUICK GUIDE TO EVENTS & PROGRAMS

START DATES	PROGRAM	TIME	DAY	PAGE #
SENIOR PROGRAMS				
February 6	Living Strong — Year Round	9-10 am	Tu, Th	17
February 6	Tai Chi — Year Round	10:30 am-12 pm	Tu	17
February 7	Young at Heart	12-3:30 pm	W	17
March 29	Maple Sugar House Trip	10 am-2 pm	Th	16
May 8	Mystery Tour & Lunch	10 am-2 pm	Tu	16
May 10	Wheeler Walking Group	9-10 am	Th	17
June 12	Vermont State House Trip	9:30 am-2 pm	Tu	16
July 24	Monument Farms Tour	9 am-2 pm	Tu	16
August 23	Lake Champlain Maritime Museum	9:30 am-3 pm	Th	16
SUMMER CAMPS				
June 18	Golf Camp (Half & Full Day)	Time Varies	M-F	24
June 18	Vermont State Parks Tour	9 am-4 pm	M-F	22
June 25	Golf Camp (Half & Full Day)	Time Varies	M-F	24
June 25	Claymation Movie Making	8:30 am-12 pm	M-F	20
June 25	On The Go Camp	8:30 am-4:30 pm	M-F	22
July 2	Fabulous Field Trips	8:30 am-4:30pm	M, Tu, Th, F	21
July 9	Golf Camp (Half & Full Day)	Time Varies	M-F	24
July 9	Young Rembrandts Art Camp	8:30 am-12 pm	M-F	20
July 9	On The Go Camp	8:30 am-4:30 pm	M-F	22
July 9	Red Rocks Nature Camp	9 am-3:30 pm	M-F	20
July 9	Baseball Camp	9 am-12 pm	M-F	23
July 9	Young Rembrandts Art Camp	1-4:30 pm	M-F	20
July 16	Golf Camp (Half & Full Day)	Time Varies	M-F	24
July 16	Common Ground Day Camp	8 am-5 pm	M-F	21
July 16	Rocketry Camp	8:30 am-12 pm	M-F	20
July 16	Survivor Camp	8:30 am-12 pm	M-F	20
July 16	Foundations Basketball Camp	9 am-12 pm	M-F	23
July 16	CSI Camp	9 am-3 pm	M-F	22
July 16	Ninja Park Warrior Camp	1-4:30 pm	M-F	20
July 16	Development Basketball Camp	1-4 pm	M-F	23
July 16	Multi-Sports Squirts	5-6 pm	M-F	23
July 16	Basketball Squirts	5-6 pm	M-F	23
July 23	Golf Camp (Half & Full Day)	Time Varies	M-F	24
July 23	Girls Spirit Camp	8:30 am-12 pm	M-F	20
July 23	On The Go Camp	8:30 am-4:30 pm	M-F	22
July 23	Camp Connect	9 am-4 pm	M-F	21
July 30	Golf Camp (Half & Full Day)	Time Varies	M-F	24
July 30	Fishing Camp	8:30 am-12 pm	M-F	22
July 30	Soccer Camp	8:30 am-12 pm	M-F	24
July 30	Red Rocks Nature Camp	9 am-3:30 pm	M-F	20
July 30	Camp Connect	9 am-4 pm	M-F	21
July 30	Archery Camp	1-4:30 pm	M-F	24
August 6	Young Rembrandts Art Camp	8:30 am-12 pm	M-F	20
August 6	On The Go Camp	8:30 am-4:30 pm	M-F	22
August 6	Young Rembrandts Art Camp	1-4:30 pm	M-F	20
August 13	Fabulous Field Trips	8:30 am-4:30 pm	M-F	21

SOUTH BURLINGTON PARKS MAP

PARK AMENITIES

- 1 Veterans Memorial Park** 70 acres
- 2 Farrell Park** 22 acres
- 3 Wheeler Nature Park** 140 acres
- 4 Red Rocks Park** 100 acres
- 5 Szymanski Park** 20 acres
- 6 Overlook Park** 1.7 acres
- 7 Underwood Property** 60 acres
- 8 Baycrest Park** 1.6 acres
- 9 City Center Park** 7 acres
- 10 Jaycee Park** 6.9 acres

